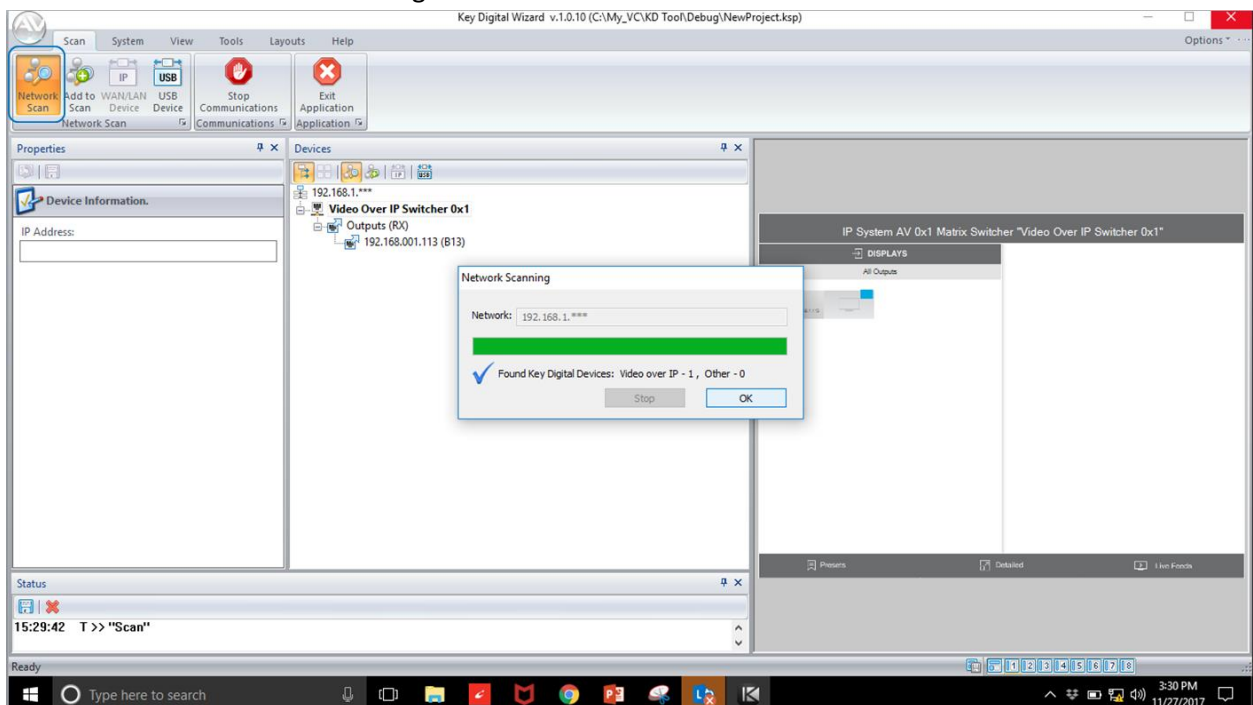


## Unit and System Setup using KDMS Pro Software

### IMPORTANT:

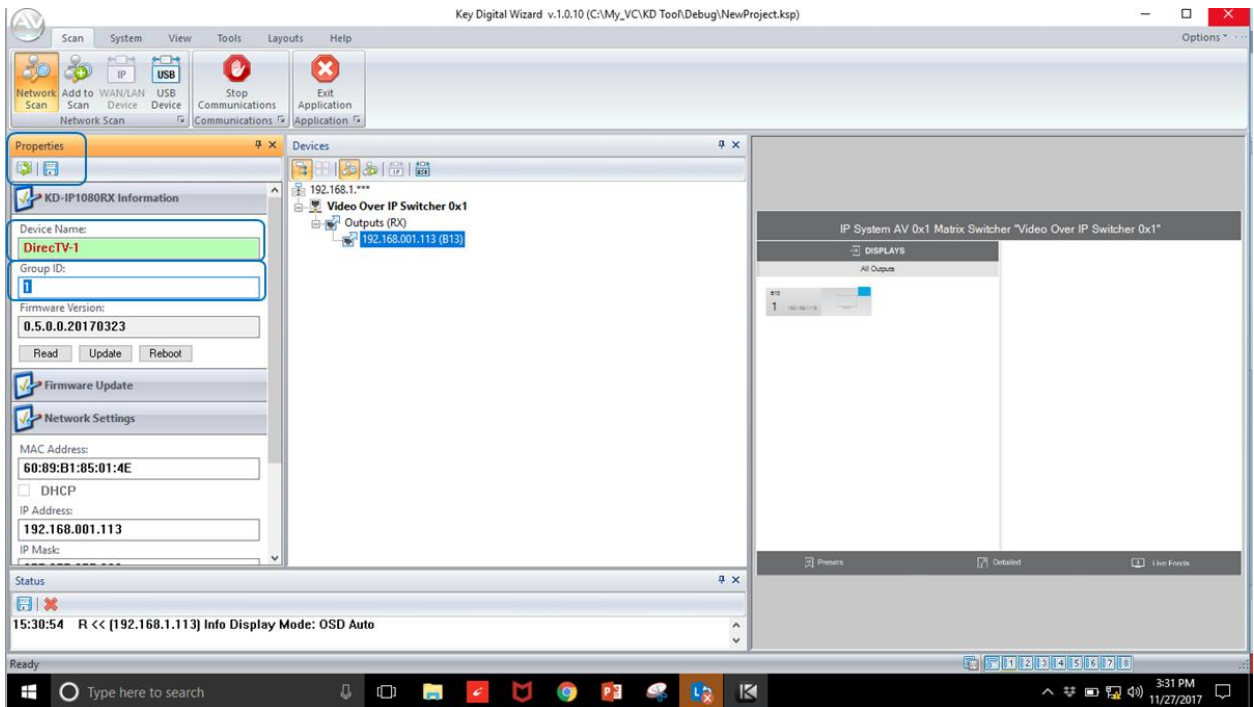
- Configure units after properly configuring your network switch according to Key Digital's [Verified Network Switch](#) document.
- Please ensure that all units are organized and labeled as you configure them

- 1) Download, install, and open [Key Digital Management Software](#)
- 2) Connect PC into network switch via a hard-wire. Disable wireless on the PC
- 3) Ensure that PC's IP address is 192.168.1.xxx type
- 4) Connect KD-IP1080 unit (one unit only) into network switch
- 5) Press **Scan** → **Network Scan** to begin scan for connected unit



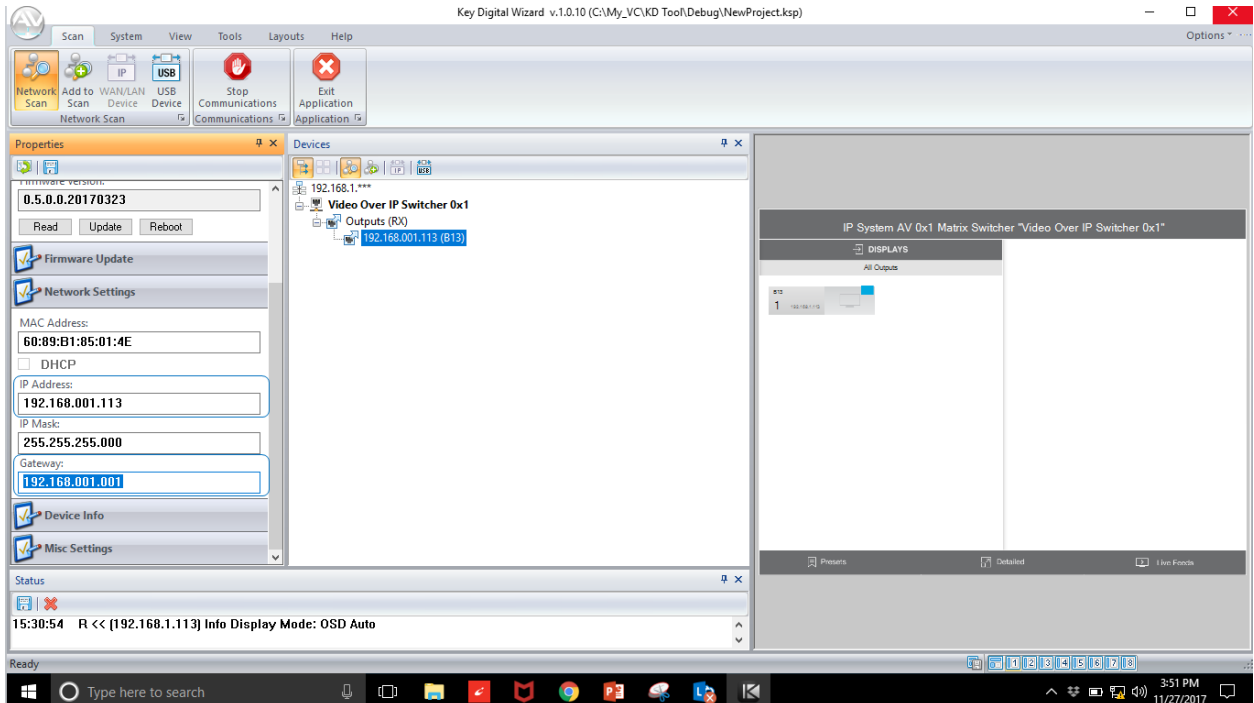
- 6) Properties Window
  - a) Set desired Device name with up to 16 characters (ie "DirecTV 1", "Conf Projector")
    - i) Do not use special characters such as !, @, \$, ?
  - b) Set desired System Group ID according to desired Input (Tx) or Output (Rx) number assignment for unit within virtual matrix system.

Note: Rx unit Group ID assignment is representative of the selected Tx unit and upon initial configuration of your virtual matrix switcher, all Rx units will view source 1 as a means of distributing video signal to all displays.

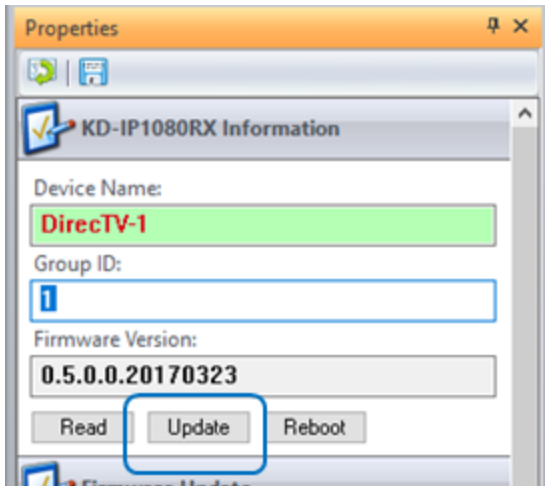


c) Enter Network Settings workspace to set desired IP settings

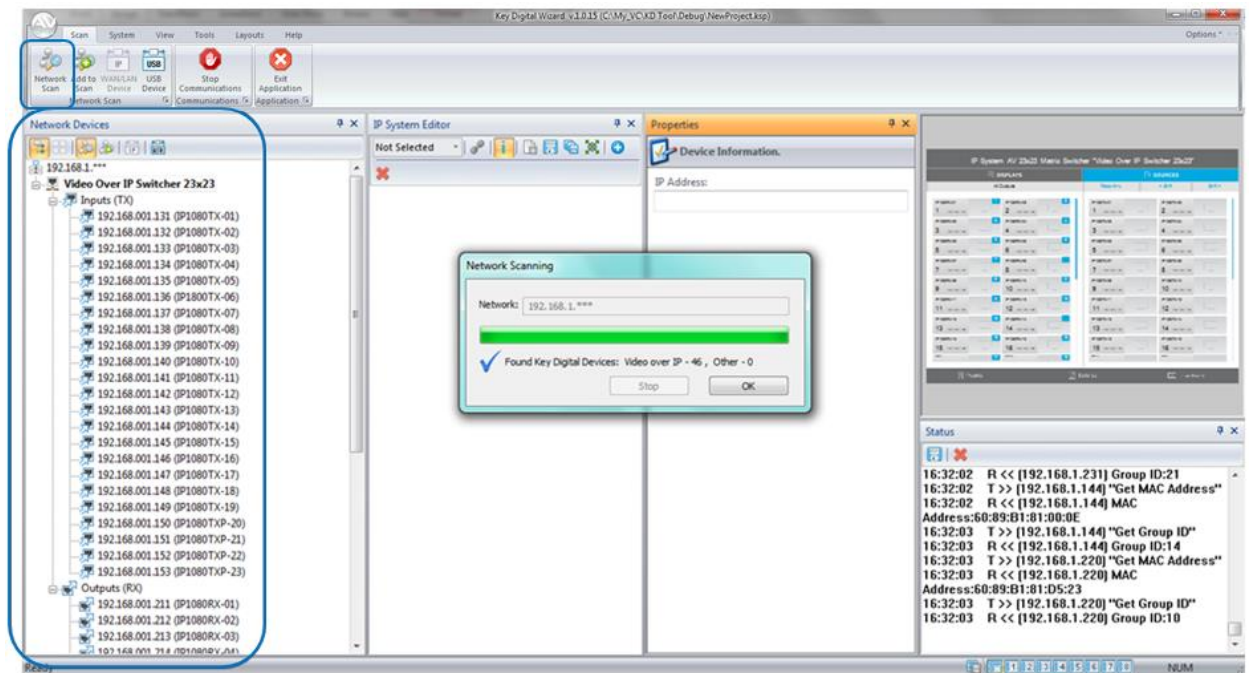
- i) IP Address is desired static IP assigned to unit
- ii) Gateway is IP address of router/default gateway



d) After all property updates are entered, press Update button in Unit Information workspace

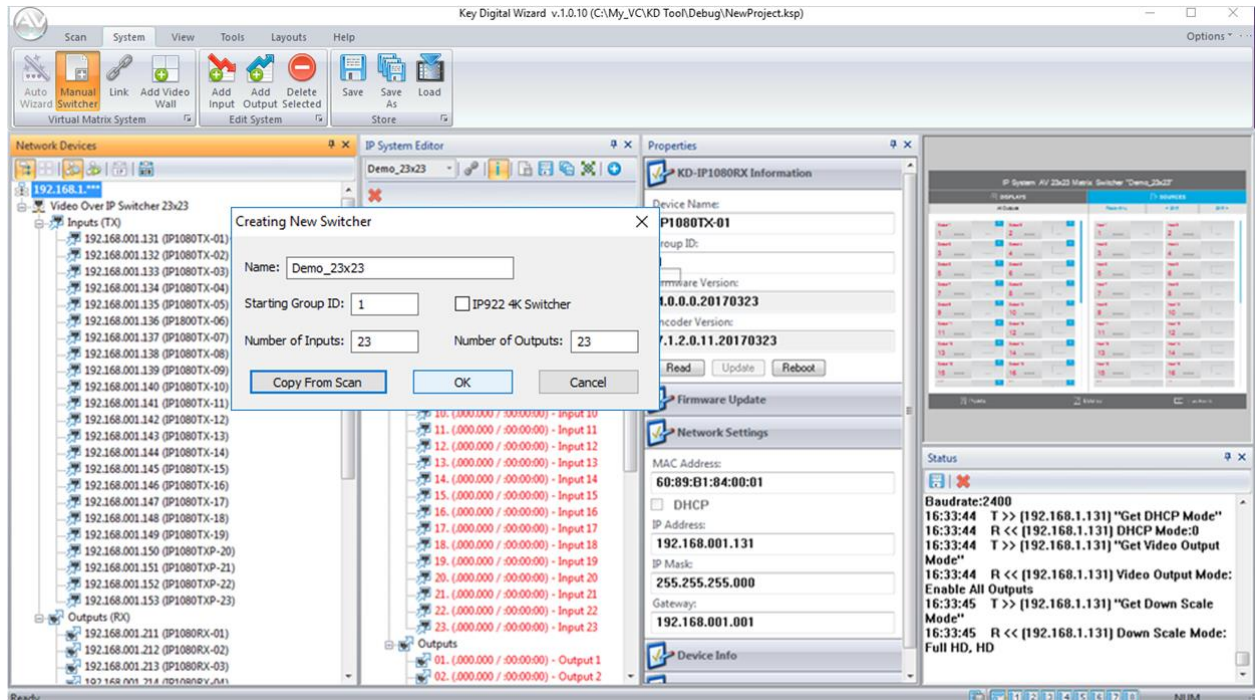


- 7) Repeat for each unit
- 8) Virtual Matrix System Configuration
  - a) Connect all units to network switch via LAN port
  - b) Hardwire PC computer to the Enterprise AV network and turn off WiFi antenna
  - c) Press Network Scan
  - d) In Network Devices window, all detected Tx and Rx units will appear

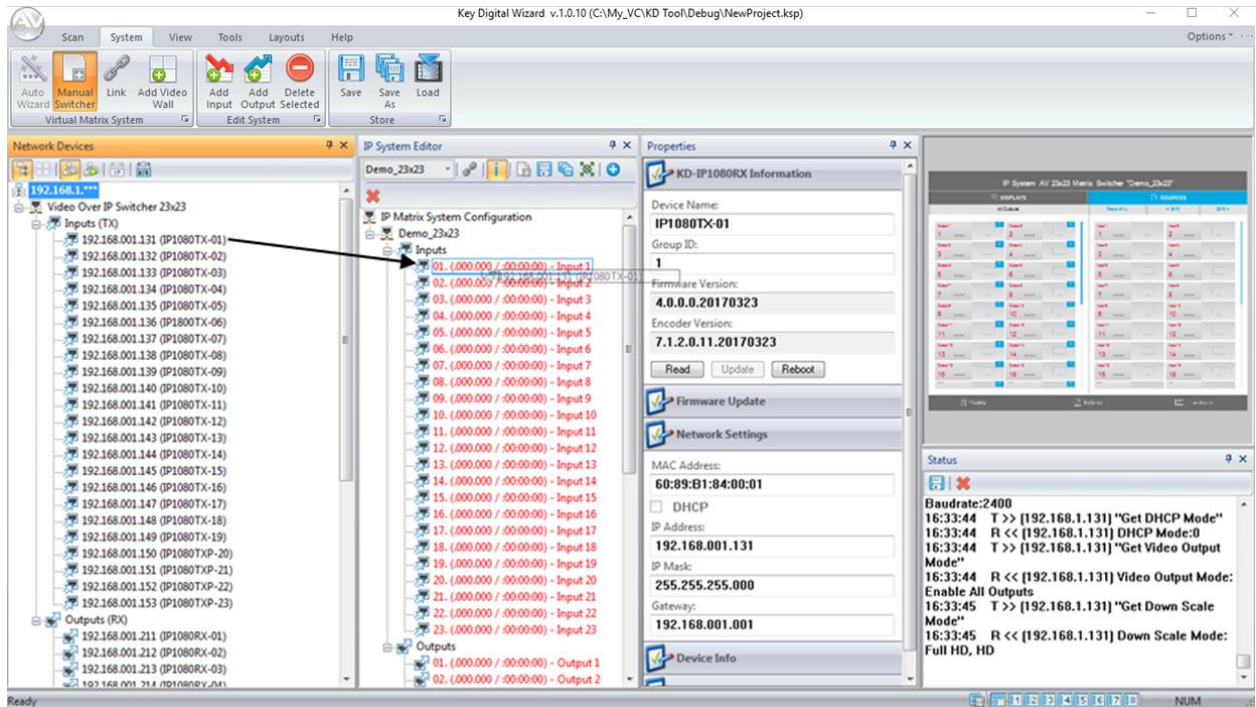


- e) Choose SYSTEM → MANUAL SWITCHER
  - i) Enter desired system name for virtual matrix system
  - ii) Enter desired number of Input and Outputs according to the number of physical units currently connected

- (1) System file is easily updated if additional units will be added/removed in future
- iii) Ensure that the **IP922 4K SWITCHER** is not selected (that is for KD-IP922 systems only).



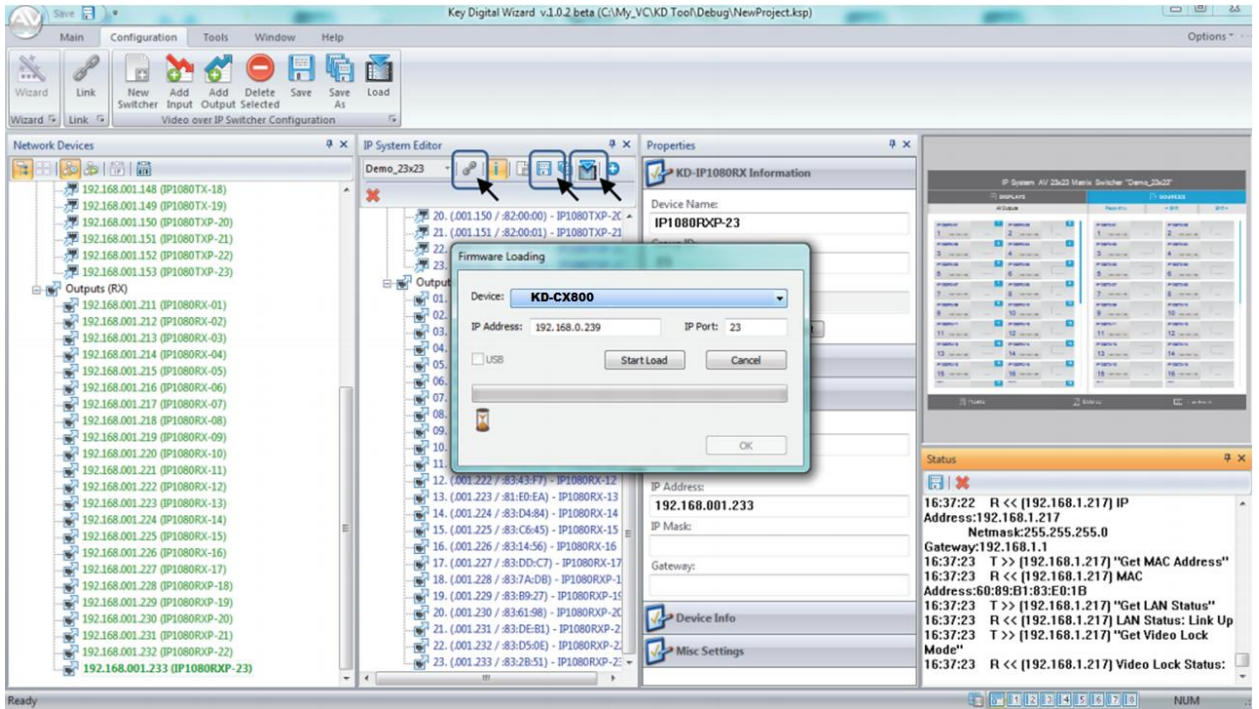
- iv) Proceeding with the COPY FROM SCAN / OK options
  - (1) IF you have all units configured and live on your network, choose COPY FROM SCAN and all units will automatically transfer to their assigned input/output positions.
    - (a) Input assignment sequence is determined by Group ID of Tx units
    - (b) Output assignment is according to the listing sequence in the network scan
  - (2) IF you do not have all units live on your network, or if you would like to manually assign input/output positions (to better accommodate programming, etc), choose OK
    - (a) Drag Tx and Rx units one-by-one to their desired input/output positioning



- f) Press LINK button after all input/output assignments are completed. Management software now makes final associations with real units.
  - i) After link association is made, each unit in the IP System listing will be in **green** text and the control GUI on the right-hand workspace will in **black** text (previously in **red**).
- g) Press SAVE button to save switcher file to the KEY DIGITAL MANAGEMENT SOFTWARE folder
  - i) File extension is “.swt” for KD-IP1080 systems
  - ii) File extension is “.ksw” for KD-IP922 systems



- 9) Loading Virtual Switcher to Control Gateway (KD-CX800 or KD-MC1000)
  - a) Ensure that the KD-CX800 or KD-MC1000 has IP address assigned using KDMS Pro software by connecting via USB, performing a USB scan and entering desired IP address as described in step 6 above. Disconnect USB and connect the control gateway device via network after the setup is completed.
  - b) Press LOAD button and the virtual matrix file will load to the KD-CX800 or KD-MC1000 control gateway so that an external control system may communicate with only a single recipient



Once the load process has completed, your KD-CX800/KD-MC1000 is ready to be controlled via TCP/IP, RS-232, or IR. Please refer to the [KD-CX800 Operation Manual](#) for additional wiring information.